

Total Sulfur & Speciated Sulfur(s) in LPG and Gas Phase Calibration Standards

DCG has available N.I.S.T. Traceable by weight gravimetrically prepared calibration standards for Total Sulfur by weight and Speciated Sulfur(s) in LPG and Gas Phase. All standards, in addition to being gravimetrically prepared and N.I.S.T. Traceable by weight, have also been verified by one or more analytical methods. These standards are made to our customer's specifications at time of order.

Total Sulfur in LPG Calibration Standards

- Prepared on wt/wt basis
- ppb to percent ranges
- Most commonly requested matrices: Propane, Propylene, N-Butane and Propane/Propylene
- Matrices such as Isobutane, Propylene, Propane/N-Butane, etc. are also available
- Dimethyl Sulfide used as total sulfur compound
- Certificates will reflect component value as Total sulfur by weight from Dimethyl Sulfide

Total Sulfur in Gas Phase Calibration Standards

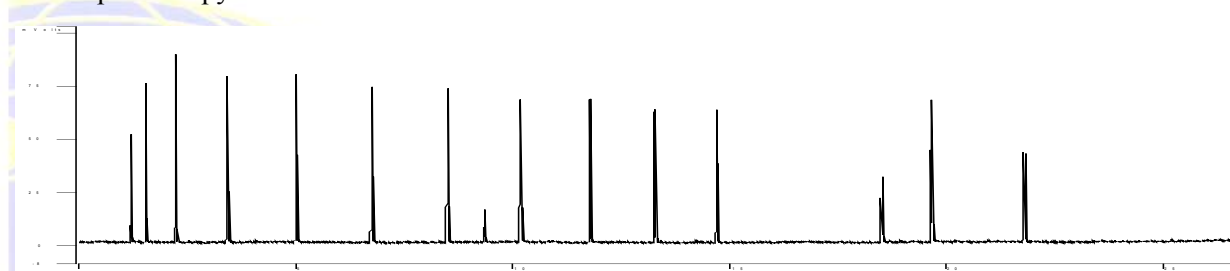
- Same as Total Sulfur in LPG except for matrix
- Most commonly requested matrices: Nitrogen, Helium, Methane, Ethane, Propane, Propylene, Propane/Propylene

Speciated Sulfur(s) in LPG Calibration Standards

- Prepared by mole or by weight
- ppb to percent range
- Same matrices as Total Sulfur in LPG Calibration Standards
- Multiple sulfur compounds can be blended together
- Consult your DCG Technical Specialist for assistance in determining sulfur compatibility
- Total Sulfur per component can be provided if ordered on wt/wt basis

Speciated Sulfur(s) in Gas Phase Calibration Standards

- Same as Speciated Sulfur in LPG except for matrix
- Most commonly requested matrices: Nitrogen, Helium, Methane, Ethane, Propane, Propylene, Propane/Propylene



C2 - C18 Mercaptans

4170 A Main Pearland, TX 77581 PH: 281-648-1894 FAX: 281-648-1895
www.dcgpartnership.com
E-mail: sales@dcgpartnership.com

Chromatographic Reference Materials